

Highlees News

20th April 2020



Dear Highlees Families,

I do hope you are keeping safe and well. These are difficult times for everyone at the moment. The staff are working really hard to ensure that we can support the children, families and each other.

If you need any support during these difficult times then please email the school office highleesoffice@hefed.org

We miss all the children however, we want you to all stay safe. Please ensure you follow the government guidelines and stay at home.

We look forward to being back together soon.

Mrs Stroud



New Executive Headteacher

Mrs Sue Lane joins the Highlees and Eyrescroft Federation as our new Executive Headteacher. She is looking forward to meeting you all and working with the team at Highlees and Eyrescroft.

Food Bank Vouchers



During this difficult time, families are struggling for food. Please contact Highlees if you do not have enough food as we are able to give out food bank vouchers.

CORONAVIRUS COVID-19

Social Distancing

AVOID

- Group gatherings
- Visits to bars/restaurants
- Sleep overs
- Playdates
- Visiting the elderly with children
- Crowded retail stores
- Gyms
- Visitors to the home
- Non essential workers in the home

USE CAUTION

- Visits to supermarkets
- Visit to pharmacy
- Visit to GP
- Traveling
- Check on friends and family safely
- Public transport

SAFE TO DO

- Go for a walk
- Jogging
- Working in the home
- DIY in and around the home
- Reading
- Going for a drive
- Video calls
- Phone calls

Just some of those who are vulnerable that these measures could help: Patients who are elderly, history of lung illness, cancer patients, immune suppressed patients, immune compromised and those with varying underlying conditions.

totalhealth
TRUSTED LOCAL CARE

Helpful Contacts:

Peterborough Womens Aid
08454 103123

Spurgeons Family Support
01933 417040

Peterborough Soup Kitchen
01733 315456

Peterborough Health Visitors
01733 777937

Peterborough Citizen Advice
0344 499 4120

Cross Keys Homes
01733 385000

Aspire Recovery Service
01733 895624

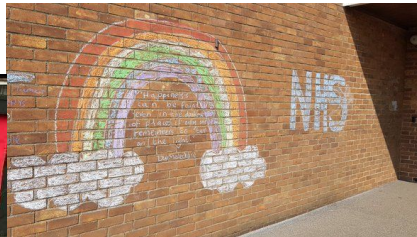


Celebrating the NHS

While out and about in the local area staff have loved to see all the fabulous artwork in windows celebrating the wonderful work the NHS are doing.

Children of Key Workers who are in school have also produced some fantastic pieces!

Well Done All!



Google Classroom

The google classroom is back!!! Work will be put on daily for the children to complete. The children need to sign into RM unify and use their username and password.

We will be contacting the children who do not access the classroom to see how we can help.

If you are struggling then please email homelearning@hefed.org and a teacher will get back to you



Wellbeing of families

We are trying to support families where we can.

You may get a phone call from a staff member to see how things are at home. If we can not get hold of you we will do a home visit.

Each week we send a text message asking you how things are at home. Please complete and someone will ring you.

Story Time

The teachers are uploading bedtime stories for the children on our website under

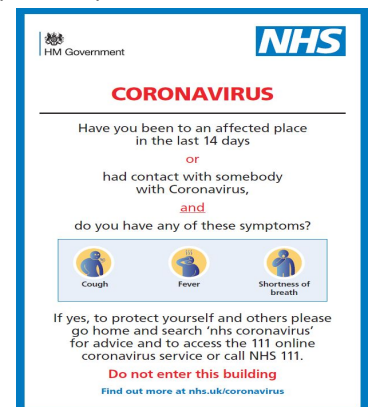
- Curriculum
- Learning at Home
- Story time

Happy listening.



COVID 19

If someone in your family is suffering with COVID 19 symptoms please let school know.



Twitter

Please follow Highlees on Twitter - this is where we put lots of important messages.

