

CLASS NOTICES

Reading

All children will read for at least 10 minutes every day in school and we advise parents/guardians to listen to your child read at home for **10 minutes a day, at least 5 days a week**. THIS IS IMPORTANT TO HELP WITH SATs PREPARATION.

PE

PE will take place on **Mondays and Fridays**. Children must come to school in their kit on PE days.

It is compulsory that the correct PE kit is worn:

- black joggers,
- plain white T-shirt (normal school polo neck is suitable) ,
- black jumper or hoodie (or red school jumper).

For Health & Safety reasons, absolutely **no jewellery** must be worn on PE days.

If you are unable to provide the correct PE kit, school uniform, winter coat or have any clothing needs, please speak with the school office who will be able to help you from our Preloved School Uniform shop.

PSHE

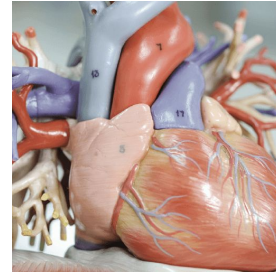
This term, children will be focusing on 'Healthy me!', exploring taking responsibility for their own health. Children will learn about drugs, exploitation, gangs, emotional well-being and managing stress.

Class Curriculum Information






Year Six
Spring 2
2025 - 2026





Why is Blood so Important for Our Bodies?



ENRICHMENT AREAS OF LEARNING

<p>English</p> 	<p>In English, children will be reading Pig Heart Boy by Malorie Blackman. The children will write an explanation text to explain how the heart works and why it is important for the survival for mammals. Children will also write a balanced argument based on the book - should xenotransplantation be banned?</p>
<p>Maths</p> 	<p>In Maths, children will continue to practice their fluency of number through our arithmetic focusses. Key areas of this term will focus on Fraction, Decimals & Percentages (including ordering, finding equivalence and finding percentages of an amount). Later on, area, perimeter and volume of different shapes will be explored as well as statistics, shape geometry and algebra.</p>
<p>Science</p> 	<p>Science is the key focus of this topic! This half term, children will explore our circulation system. Examine the veins, arteries and chambers up close and understand how they all work hard to move blood around our bodies. Find out how to keep your heart happy with cardiovascular exercise and healthy food. During this topic the children will be carrying out experiments linked to the learning of blood heart, They will gain a clear understanding of how important the heart is to our body.</p>

ENRICHMENT AREAS OF LEARNING

<p>Computing</p> 	<p>Our focus in Computing this term will be to explore data and information! Children will learn about what a spreadsheet is, how to modify a spreadsheet, what a formula is and to calculate and duplicate on a spreadsheet. These skills will then be put into practice in an event that the children will plan and then present their data.</p>
<p>R.E.</p> 	<p>In R.E, children will continue to learn about Buddhism. They will explore issues around cruelty to animals raised by the story of the injured swan. Furthermore we will continue to learn about Prince Siddhartha's journey to becoming a Sadhu.</p>
<p>DT/Art</p> 	<p>Children will be adding to their sketchbooks this term with specific 10 minute tasks spread across the term building their drawing skills. We will be completing a special Art project to create a whole school Garden wall using various mediums.</p>
<p>P.E.</p> 	<p>In PE on Mondays, children will be doing Fitness, where they will develop an awareness of what a body is able to do and develop speed and stamina. On Thursdays, children will develop their OAA skills, building communication and trust, whilst showing an awareness of safety. Children will also be working on team-building activities.</p>

ENRICHMENT AREAS OF LEARNING

Music

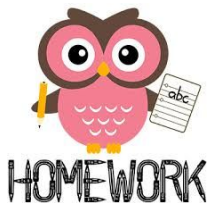


In Music, children will be exploring and performing the, "You've got a friend" unit of learning. Pulse and rhythm games will develop their musicality alongside vocal warm-ups. Various songs will be used as a basis for children to play an instrument to accompany the song.

Spanish



In Spanish, we will be learning about 2d shapes, time and measurements. Furthermore, linking nicely to our topic, we will explore "Frutas", vegetables and going to the doctor.



Every Friday, we will set homework which will be based on either English or Maths. Homework is due in on the following **Wednesday**.

Children should continue to practise their times tables to 12 x 12 (TT Rockstars is great for this!) as well as the division facts. Children should be using SATs companion at home daily. We recommend 30 minutes. Every half term, children will be set a topic based homework project to do.



To stay up-to-date with what's happening in Year 6, and to see all your child's Dojo points, please sign up to your child's class Dojo account. Just scan the QR code below and follow the instructions!



Beech
Class



Sycamore
Class

